



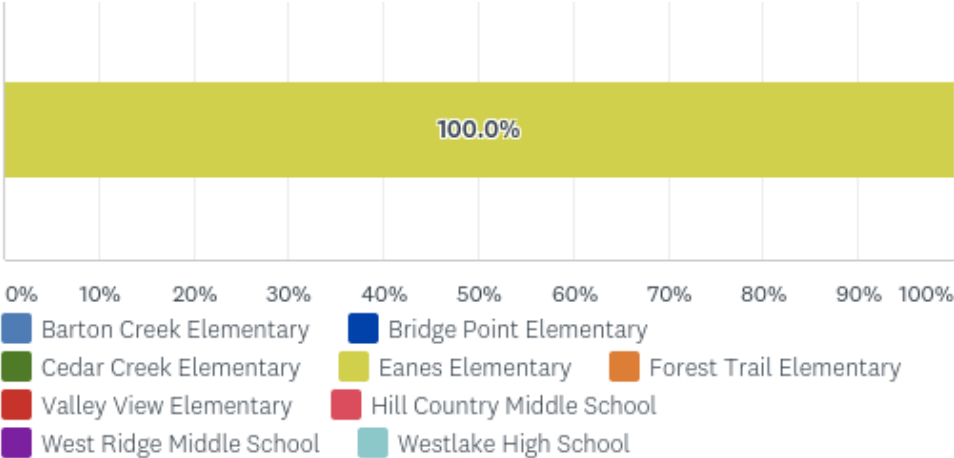
# Parent Climate Survey February 2018

**238** Total Responses

---

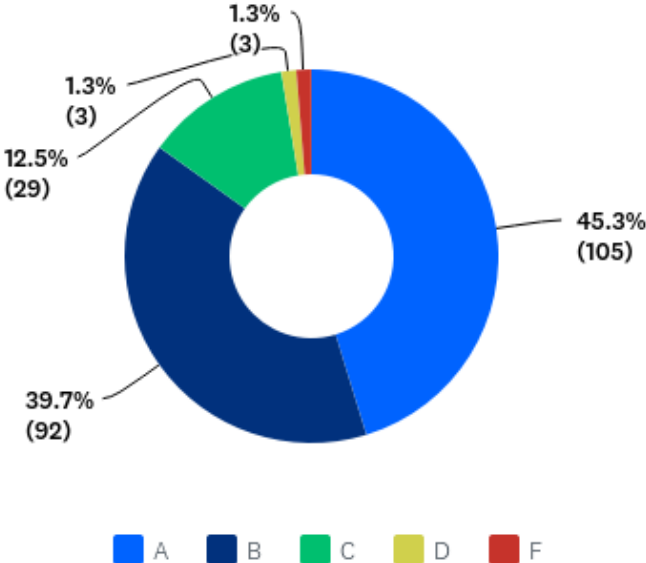
# What school does your child attend?

Answered: 238 Skipped: 0



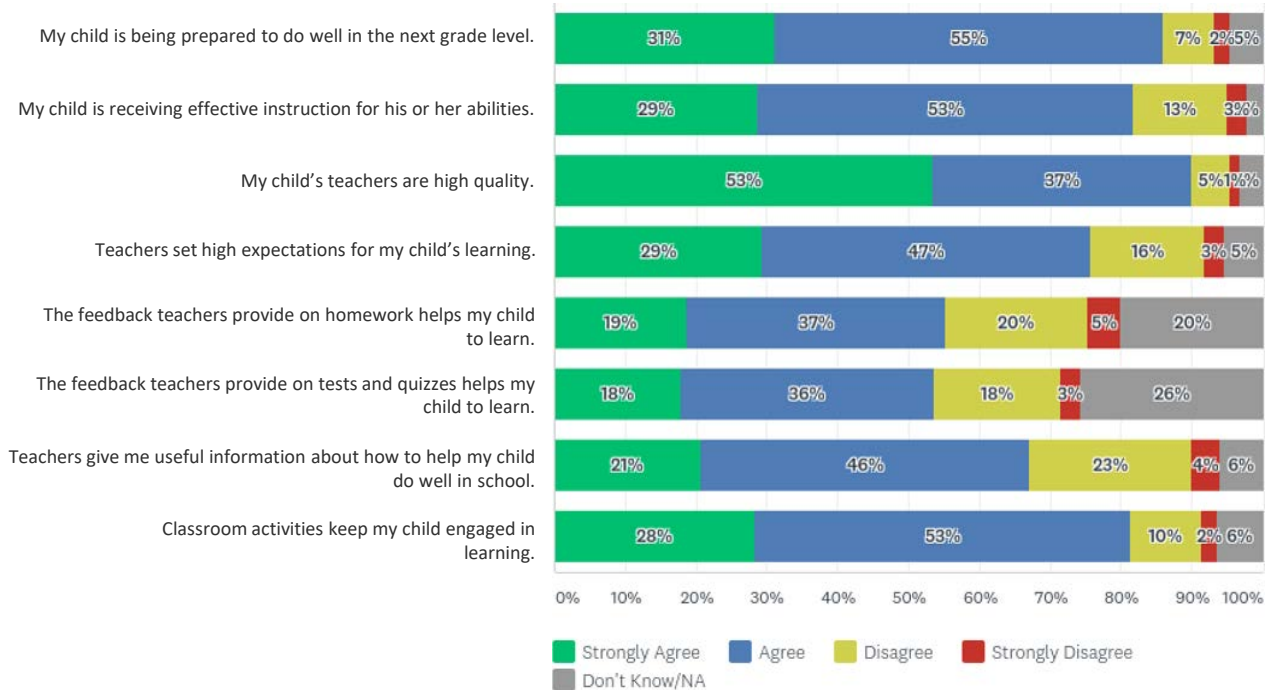
**What grade would you give your school for how well it is educating your child? Please tell us what rating you would give the quality of your child’s school.** On this scale, “A” represents outstanding, “C” is average and “F” is failing.

Answered: 232 Skipped: 6



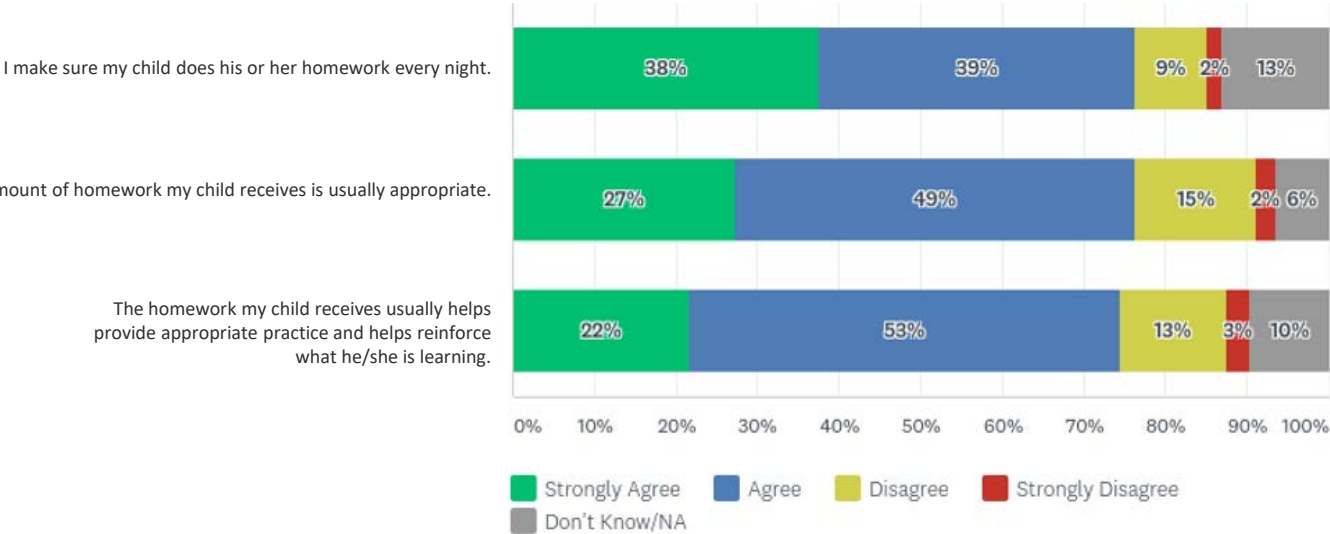
# Academic Preparation

Answered: 219 Skipped: 19



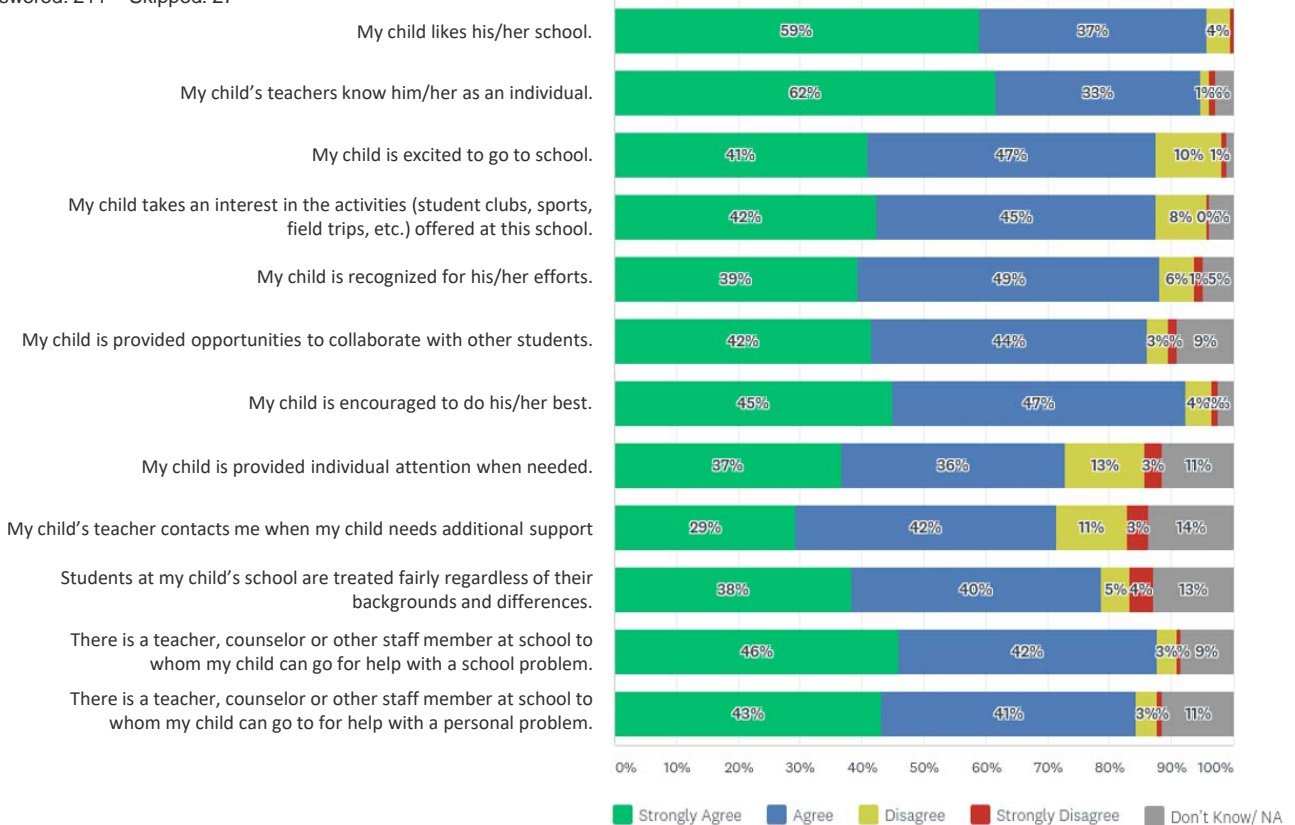
# Homework

Answered: 216 Skipped: 22



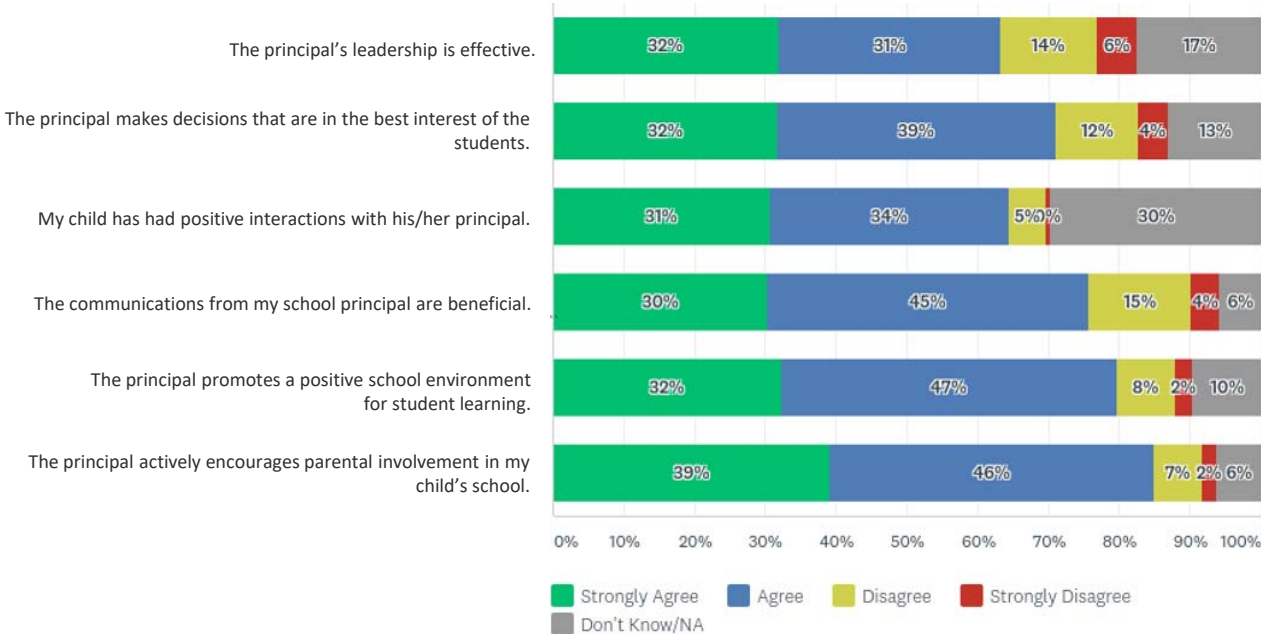
# Student Support

Answered: 211 Skipped: 27



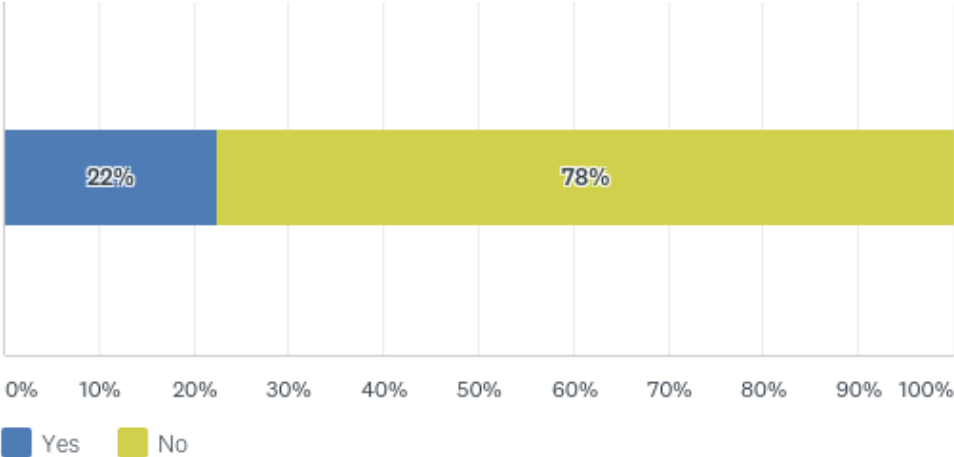
# School Leadership

Answered: 208 Skipped: 30



# Have you had an issue to discuss with the principal or assistant principal this year?

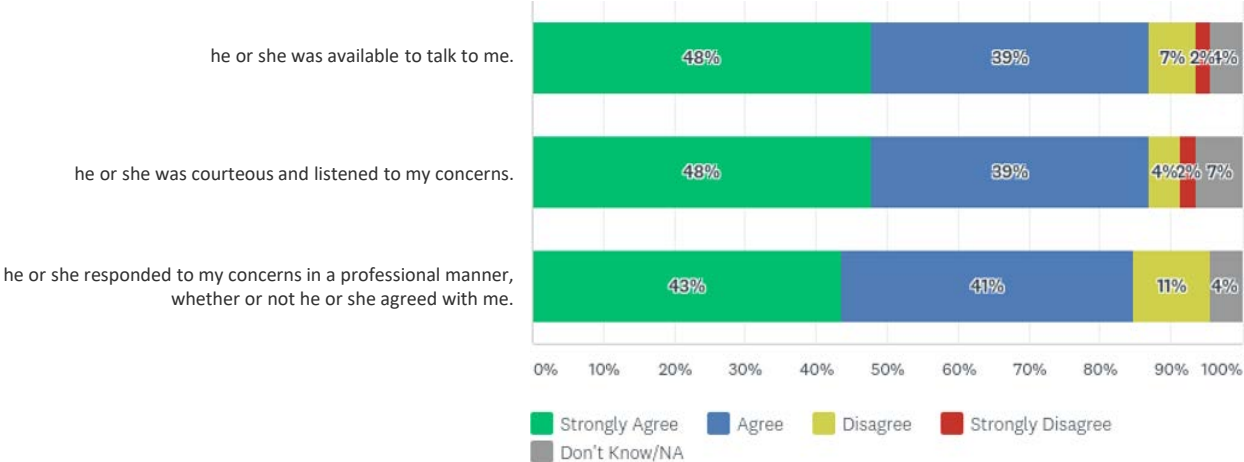
Answered: 205 Skipped: 33





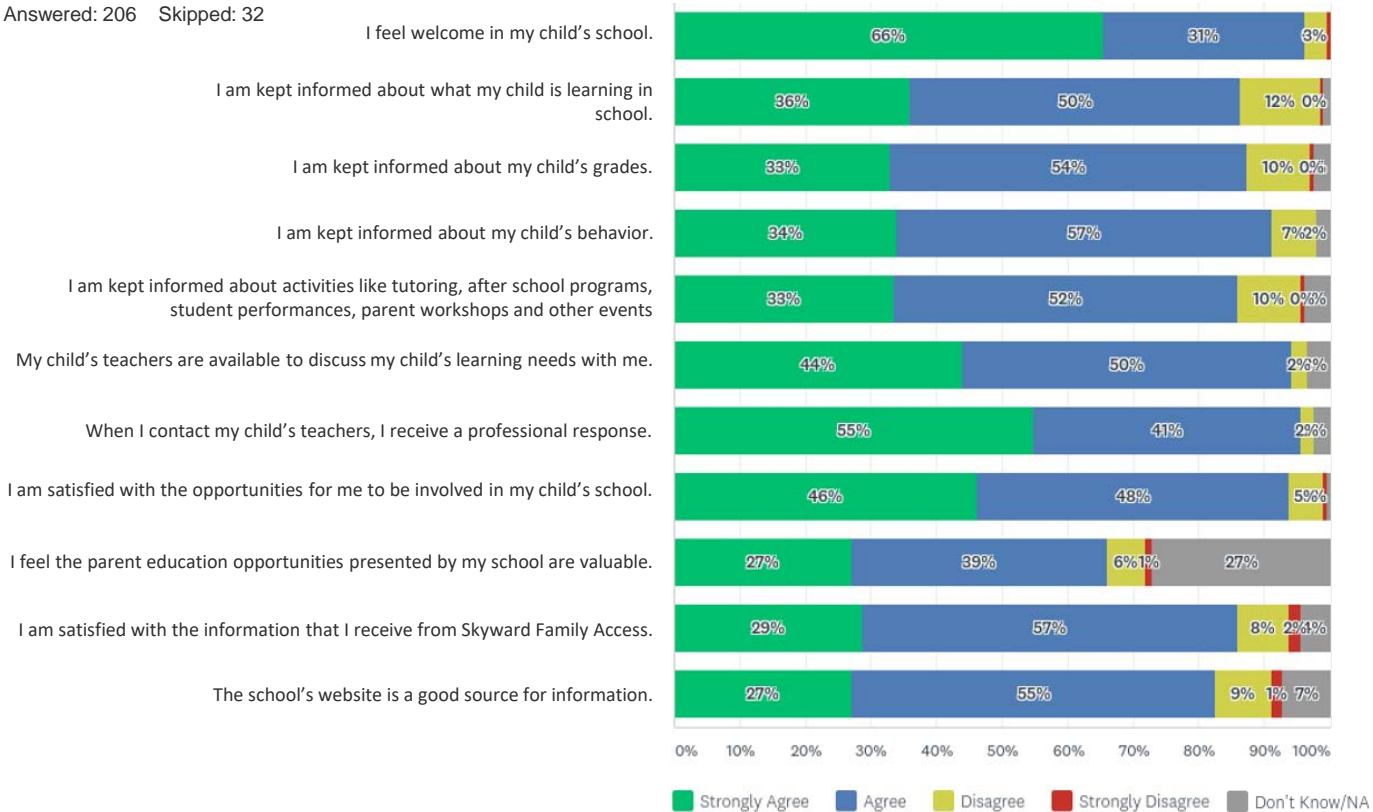
# When I have had an issue to discuss with the principal or assistant principal he or she . . .

Answered: 46 Skipped: 192



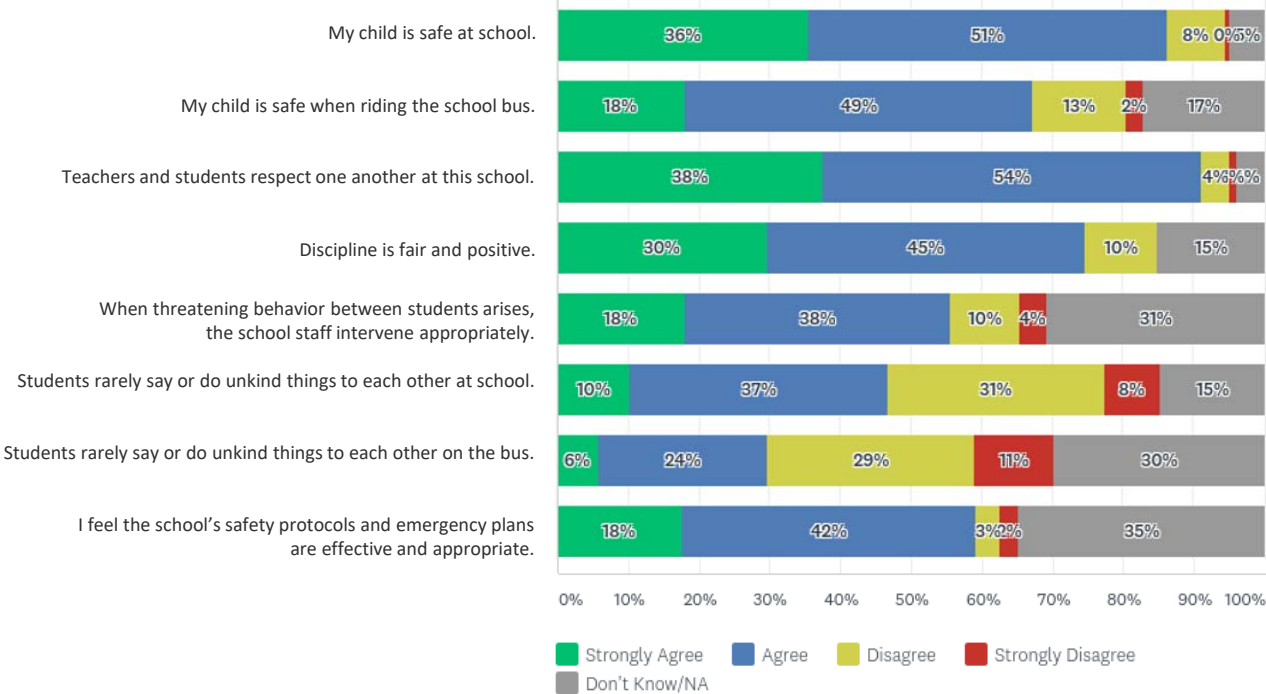
# Parent Engagement

Answered: 206 Skipped: 32



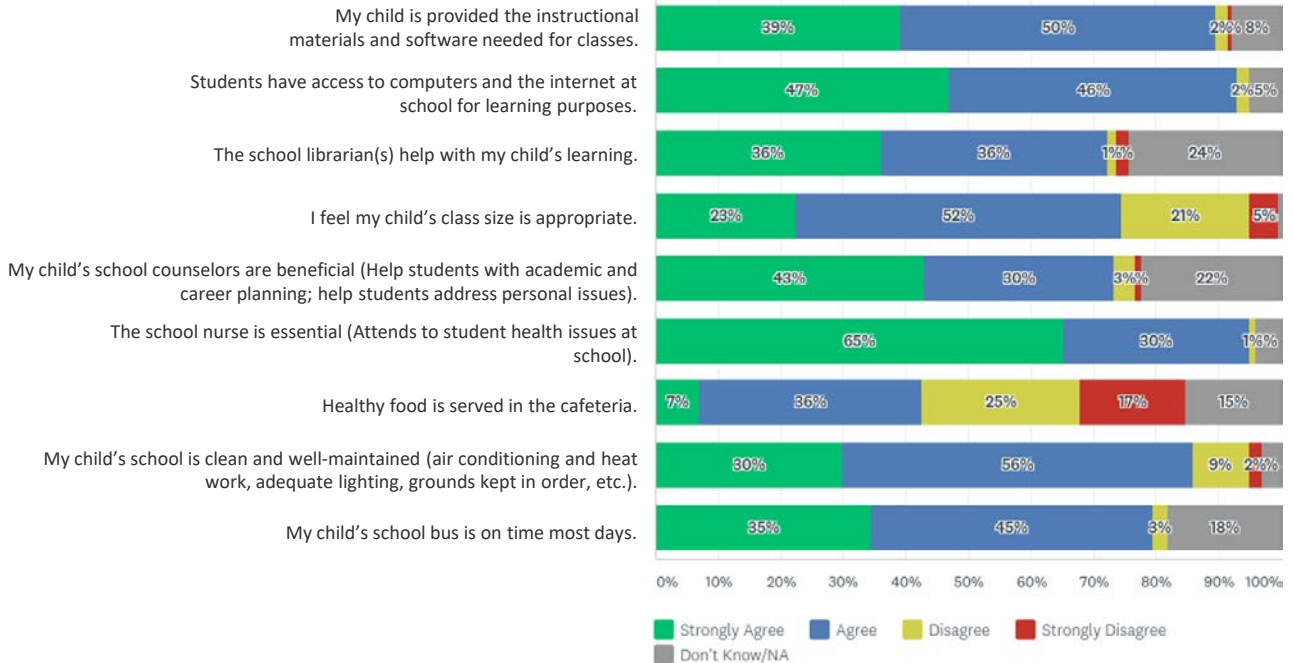
# Safety and Behavior

Answered: 205 Skipped: 33



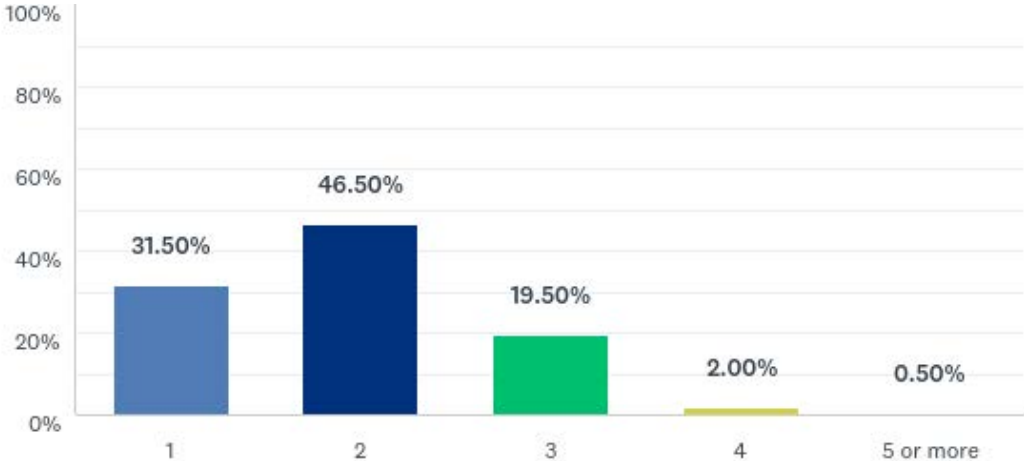
# School Operations

Answered: 202 Skipped: 36



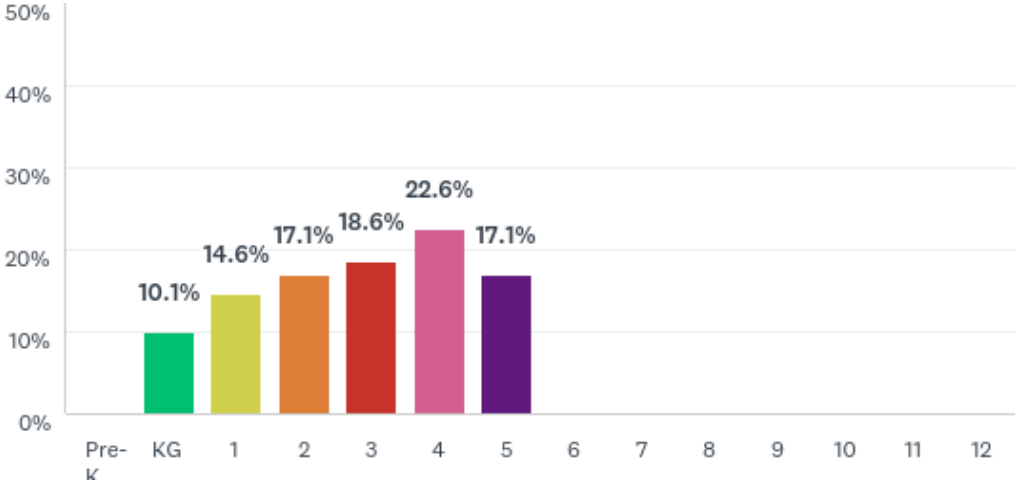
# How many children do you have attending a district school?

Answered: 200 Skipped: 38



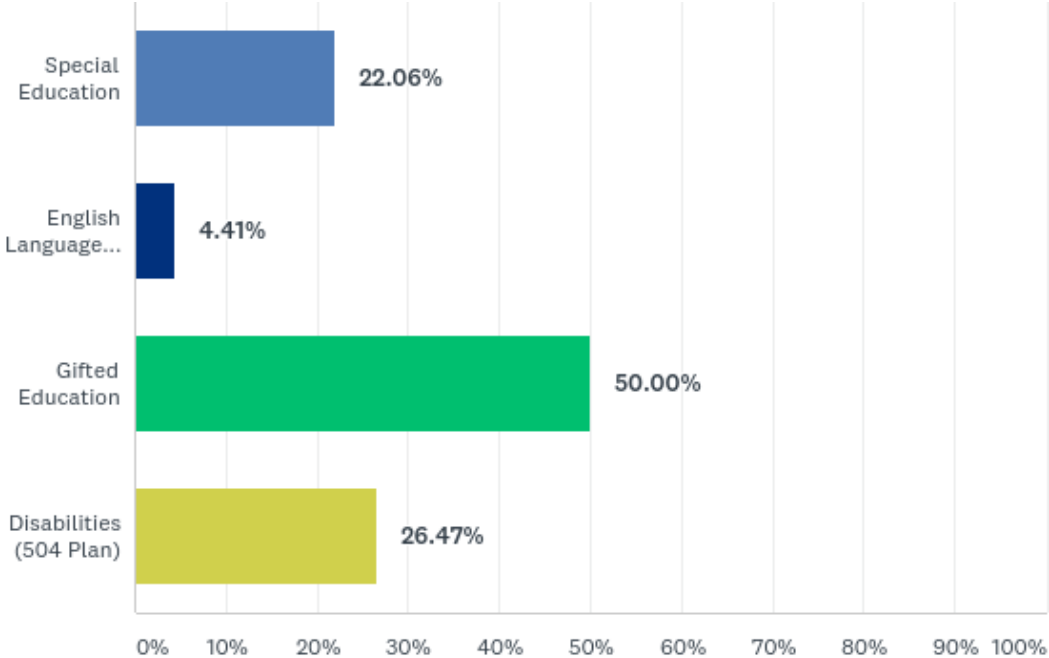
# Please indicate the grade level of the child for whom you are responding.

Answered: 199 Skipped: 39



# Does your child receive any of the following services at this school?

Answered: 68 Skipped: 170



# What are the best ways for the school to communicate with you about your child's education?

Answered: 200 Skipped: 38

