



## EISD Health Services

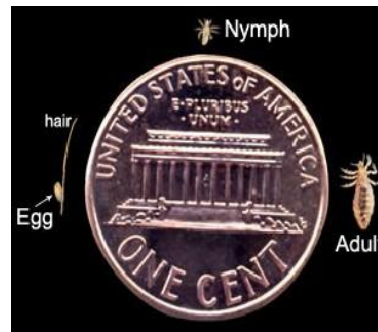
### Head Lice Notification

Parents: Head lice have been reported in \_\_\_\_\_.

It is important for you to check your child's head **TODAY**.  
Parent action is the **MOST EFFECTIVE** means of preventing the spread of lice.  
Treat/remove any head lice or nits found on your child's head.

#### Head Lice Screening Procedure

- ☑ Strong source of light (sunlight or high watt light bulb).
- ☑ "Rat tail comb", pencil or Q tip.
- ☑ Part child's hair in sections (see picture below) using comb, Q tip or pencil.
- ☑ Under light, inspect nape of neck and behind the ears first (red areas).
- ☑ Look for crawling lice or nits (live lice are the size of a sesame seed, usually brown and move quickly away from light. Nits are tiny, yellowish-white or brown oval eggs attached securely to the hair shaft. See picture below).
- ☑ Check rest of the head entirely; this should take 15 minutes.



#### If either lice or nits are present

- ☑ Please refer to <http://www.eanesisd.net/departments/health/comdis>.
- ☑ Refer to 14 Day Treatment Calendar (provided in nurse's office or nurse and teacher School Fusion pages).
- ☑ Additional tips: Only ordinary house cleaning (wash bed linens and recently worn clothing on hot washer/dryer settings. Non washable items (pillows, stuffed animals, coats, back packs) should be placed in dryer on highest setting for 20 minutes or sealed in plastic bag for one week.